

# MONTHLY MEMBERSHIP PROGRESS REPORT

LOCATION AUSTRALIA

District 201N2

Results as of: 4/30/2023

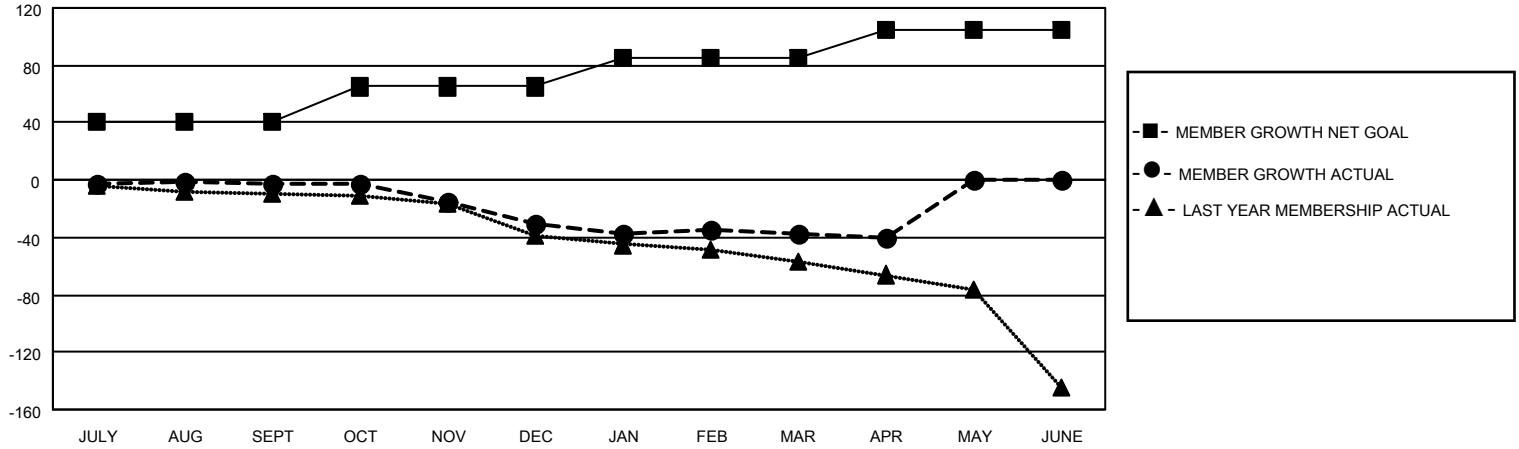
Clubs			
RESULTS FOR 2022-2023			
QUARTER	NEW CLUB GOAL	NEW CLUBS	DROPPED CLUBS
JULY/AUG/SEPT	0	0	0
OCT/NOV/DEC	0	0	0
JAN/FEB/MAR	0	0	0
APR/MAY/JUNE	1	0	0

Members			
RESULTS FOR 2022-2023			
QUARTER	MEMBER GROWTH NET GOAL	MEMBER GROWTH ACTUAL	DROPPED MEMBERS ACTUAL (including transfers)
JULY/AUG/SEPT	40	38	35
OCT/NOV/DEC	25	41	58
JAN/FEB/MAR	20	24	30
APR/MAY/JUNE	20	12	12

**GOALS AND ACTUAL NEW CLUBS CUMULATIVE**



**GOALS AND ACTUAL MEMBERS CUMULATIVE**



DROPPED CLUBS: 0	
<u>DROPPED MEMBERS</u>	
DECEASED	21
CLUB CANCELLED	0
OTHER	114
<b>TOTAL</b>	<b>135</b>

36 CLUBS OF 65 ADDED 1 OR MORE NEW MEMBERS

[CLICK HERE FOR CUMULATIVE MEMBERSHIP DATA](#)

<u>GENDER DISTRIBUTION</u>	
MALE	873 (63.44%)
FEMALE	502 (36.48%)
NON BINARY	1 (0.07%)
PREFER NOT TO ANSWER	0 (0.00%)
<b>TOTAL FAMILY UNIT MEMBERS</b>	<b>176</b>
<b>FAMILY MEMBERS PAYING HALF DUES</b>	<b>90</b>